

Meitenkai  
members

## Restaurants by cuisine

# Ramen&Udon/Soba

Udon and soba noodles with excellent soup stock  
at a popular ramen restaurant



SAN  
PLAZA  
B1  
MAP:60

**Lanzhou beef noodles**  
880 yen (tax included)

**Lanzhou beef noodles follows the  
'One clear, two white, three red, four  
green, and five yellow principle.'**

A clear, pure broth. White radish. Savory, spicy  
red chili oil. Vibrant green cilantro. Handmade  
noodles made from flour, with a slight yellow tint.

[Lanzhou beef noodles, ramen, rice bowl]  
Becca Kung-fu Ramen



自家功夫拉麵

OPENING HOURS / 11:00 AM – 9:00 PM  
REGULAR DAY OFF / Closed (New Year's Day)



SAN  
PLAZA  
B1  
MAP:35

**Michelin dandan noodles**  
940 yen (tax included)

**Experience Michelin star noodles!**

Dandan noodles made with select ingredients such as  
Kobe pork, Awaji onion, cashews from India, domestic  
mizuna and shibazuke pickles from Kyoto and  
homemade chili oil. Uses more than 20 kinds of spices.

[Michelin Bib Gourmand Award Dandan noodles specialty]

OPENING HOURS / 11:00 AM – 9:00 PM (Last order 8:30 PM)

Sundays only / 11:00 AM – 8:00 PM (Last order 7:30 PM)

REGULAR DAY OFF / Closed (New Year's Day)

KOBE ENISHI



SAN  
PLAZA  
B1  
MAP:7

**White tonkotsu ramen**  
850 yen (tax included)

**TA mellow broth that maximizes the  
savory taste of pork bones!**

Our special pork bone broth is made by carefully firing up the  
broth in our super-pressure cooker and combining it with our  
specially aged soy sauce made by adding plenty of seafood  
including fresh and dried sardines, root kelp, mackerel, bonito,  
and dried bonito. The homemade thin noodles made with whole  
wheat flour are a perfect match. We hope you will enjoy it!

[Ramen/Dipping ramen]  
SANPOMEN-SHIN-

三豊麺 真

OPENING HOURS / 11:00 AM – 9:00 PM  
REGULAR DAY OFF / Closed (New Year's Day)



SAN  
PLAZA  
B1  
MAP:58

**Oishii ramen**

**Oishii ramen that you might want to  
keep secret!**

A one-of-a-kind soup that you'll want to eat  
every day. Enjoy the "oishii ramen", light but  
condensed with rich, savory ingredients.

[Ramen]  
KAMUKURA



OPENING HOURS / 10:30 AM – 10:00 PM (Last order 9:30 PM)  
REGULAR DAY OFF / Closed (New Year's Day)



CENTER  
PLAZA  
B1  
MAP:1

**Cheese-topped tomato ramen  
with a side of rice set**  
1,480 yen (tax included)

**Tomato and cheese are a perfect  
combination! An exquisite dish!**

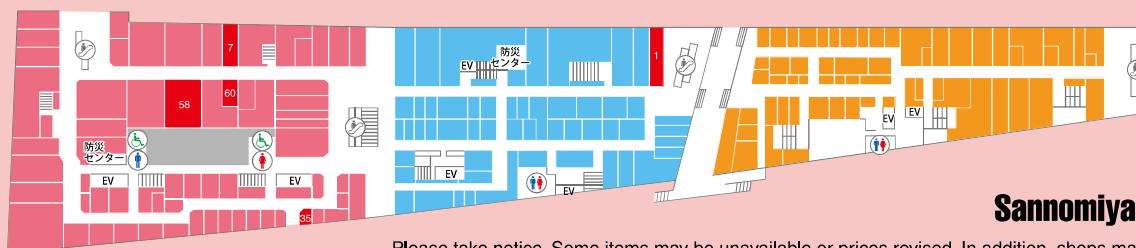
Enjoy the rich aroma and deep flavor of Parmigiano  
Reggiano. We've started offering set menus with a side of  
rice to be added to the remaining broth after finishing the  
ramen.

[Gyoza, rice after noodles]  
Red rame TOMAKO



OPENING HOURS / 11:00 AM – 9:30 PM (Last order 9:00 PM)  
REGULAR DAY OFF / Closed (New Year's Day)

B1



FOR  
FOREIGNERS



ELEVATOR

**Sannomiya Plaza Meitenkai**

Please take notice. Some items may be unavailable or prices revised. In addition, shops may be closed without notice.

# Ramen&Udon/Soba

Udon and soba noodles with excellent soup stock  
at a popular ramen restaurant



CENTER  
PLAZA  
B1

MAP:11

**Meat Lanzhou ramen**  
1,300 yen (tax included)

One of the ten major noodles in China and forever popular with the masses. Homemade, hand-pulled noodles with diced beef and more than 10 kinds of spices in the finest broth. Extra beef and your choice of noodle thickness for absolute satisfaction.

[Ramen & Chinese]  
ICHITEN ICHIMEN

一 天 一 面

OPENING HOURS / 11:00 AM – 9:00 PM  
REGULAR DAY OFF / Closed (New Year's Day)



CENTER  
PLAZA  
B1

MAP:51

**Cement Chinese noodles**  
850 yen (tax included)

**Dried sardines lightly seasoned with chicken broth.**  
Dried ground sardines combined with chicken soup stock, a light, refreshing dish. If you love seafood based ramen, you must try it!

[Japanese classic ramen]  
IPPINTAMOTSU

一品保

OPENING HOURS /  
Weekdays 11:30 AM – 3:00 PM, 5:30 PM – 8:00 PM  
Sat, Sun, Holidays 11:30 AM – 3:00 PM  
REGULAR DAY OFF / Wednesday



SAN  
PLAZA  
1F

**Dandan noodles**  
980 yen (tax included)

The rich aroma of sprouted golden sesame seeds. The popular Dandan noodles, infused with the enticing aroma of roasted sprouted golden sesame seeds, are sure to whet your appetite. Both the noodles and the rich, flavorful broth are so delicious, you'll find yourself craving more with every bite.

[Ramen]  
KUMAGORO

くまごろう 熊五郎

OPENING HOURS / 11:00 AM – 5:00 PM (Last order 4:30 PM)  
REGULAR DAY OFF / Closed (New Year's Day)



SAN  
PLAZA  
B1

MAP:9

**Kamaage udon (medium)**  
370 yen (tax included)

**Freshly made and boiled Sanuki udon specialty**  
The freshly boiled noodles are placed directly from the kettle into the vat, giving it a chewy texture and the rich flavor of domestic wheat, making it a signature product.

[Sanuki udon specialty]  
MARUGAME SEIMEN

このうどんは、生きている。  
丸亀製麺

OPENING HOURS / 10:00 AM – 9:30 PM (Last order 9:00 PM)  
REGULAR DAY OFF / Closed (New Year's Day)



SAN  
PLAZA  
B1

MAP:62

**Kiwami pork udon with plenty toppings**  
880 yen (968 yen including tax)

**Udon no Shikoku, new menu!**  
Tender pork belly, leeks, deep-fried tofu, and more! The udon noodles and bonito broth are a perfect match!

[Sanuki udon]

四国 餛飩 四国  
UDON SHIKOKU

OPENING HOURS /  
11:00 AM – 4:00 PM, 5:00 PM – 9:00 PM (Last order 8:30 PM)  
REGULAR DAY OFF / Monday



PLAZA  
WEST  
B1

MAP:50

**Light set (rice balls are also available)**  
600 yen (tax included)

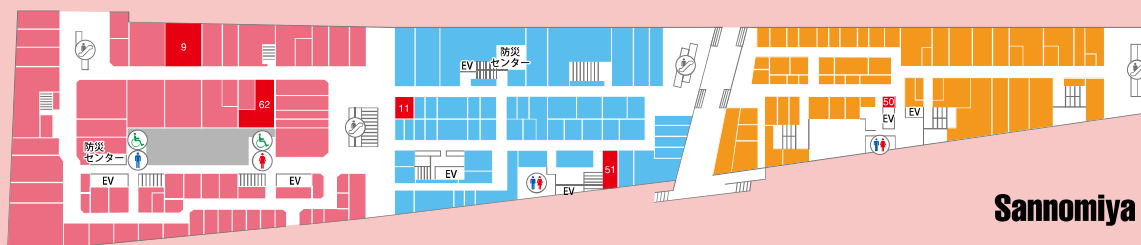
**A small restaurant, lovingly prepared with great care.**  
Broth painstakingly made from bonito flakes and kelp and chewy udon noodles boiled in a pressure cooker are a great match.

[Udon/Soba]

かやく亭  
KAYAKUTEI

OPENING HOURS / Around 12:00 AM – 4:00 PM  
REGULAR DAY OFF / Monday

B1



ELEVATOR

Sannomiya Plaza Meitenkai



Meitenkai  
members

## Restaurants by cuisine

# Pasta/Western&Meatdishes

Popular pasta and excellent western food!  
When you want to eat with gusto, meat dishes are the way to go!



SAN  
PLAZA  
B1  
MAP:40

**Beef tendon carbonara**  
1,300 yen (tax included)

**Carbonara with beef tendon unique to Kobe!**

Carbonara unique to RYU-RYU, using tendon instead of bacon.

SPAGHETTI  
**RYU-RYU**  
SINCE 1977

OPENING HOURS / 11:00 AM – 9:00 PM (Last order 8:30 PM)  
REGULAR DAY OFF / Closed (New Year's Day)



SAN  
PLAZA  
B1  
MAP:57

From 1,180 yen (tax included) on weekdays  
Weekends and holidays (with soup)  
from 1,230 yen (tax included)

**Pasta with salad bar and drink bar!**

A great set with your favorite pasta, salad bar, drink bar!! Pasta can be changed to pizza.

Pasta & Pizza  
RESTAURANT  
**DiL PAPA**

OPENING HOURS / 11:00 AM – 9:00 PM (Last order 8:00 PM)  
REGULAR DAY OFF / Mondays (excluding national holidays)



SAN  
PLAZA  
B1  
MAP:64

**Whitebait and small scallops with salt koji and lemon**  
1,4370 yen (1,580yen including tax)

A refreshing pasta with a hint of lemon fragrance!  
The mild salt koji broth, with the tanginess of the lemon, enhances the flavor of the seafood.  
The flavor and texture of the kale, balanced with the refreshing acidity of lemon, makes this a highly recommended dish.

[Japanese pasta and dessert]  
**KONANA**



OPENING HOURS / 11:00 AM – 9:00 PM (Last order 8:30 PM)  
REGULAR DAY OFF / Monday, and Closed (New Year's Day)



SAN  
PLAZA  
B1  
MAP:48

**2 hamburg steaks with ponzu and grated daikon**  
1,050 yen (tax included)

**In the meantime, bon appetit!**

APlenty of grated daikon and a scorching hot griddle. Careful of splattering sauce!  
Mayo-based Kobe sauce is also very popular with regulars.

[Hamburg steak specialty]



OPENING HOURS / 11:30 AM – 3:00 PM, 5:30 PM – 8:30 PM  
REGULAR DAY OFF / Irregular days off



SAN  
PLAZA  
2F

**Children's lunch plate for adults**  
1,790 yen (1,969yen including tax)

**For adults, too!**

A collection of Western-style classics that everyone loves, hamburg steaks, rice omelets, fried shrimp, and crab cream croquettes.

[Restaurant]



OPENING HOURS / 11:00 AM – 8:00 PM (Last order 7:00 PM)  
REGULAR DAY OFF / Closed (New Year's Day)

**B1**



ELEVATOR

**Sannomiya Plaza Meitenkai**

Please take notice. Some items may be unavailable or prices revised. In addition, shops may be closed without notice.

Meitenkai  
members

## Restaurants by cuisine

# Pasta/Western&Meatdishes

Popular pasta and excellent western food!  
When you want to eat with gusto, meat dishes are the way to go!



CENTER  
PLAZA  
B1  
MAP:20

**Tandoori chicken curry**  
950 yen (tax included)

Please enjoy the spicy curry with plenty of vegetables at Kobe Roman. We have been carefully selecting, blending, and roasting our own spices for many decades. Enjoy the enhanced flavor, aroma, and spiciness. Try adding some to our curry.

[Curry & Western food]  
KOBÉ ROMAN

神戸浪漫

OPENING HOURS / 11:00 AM – 3:00 PM (Last order 2:30 PM),  
5:00 PM – 8:00 PM (Last order 7:30 PM)  
Until 3:00 PM only on Fridays  
REGULAR DAY OFF / Monday



さん  
プラザ  
B1  
MAP:2

**Premium Chateaubriand set**  
2,600 yen (tax included)  
**Extra-large minced cutlet set**  
1,100 yen (tax included)  
**Premium pork loin cutlet set**  
1,900 yen (tax included)

The finest pork that recreates the concept of tonkatsu!

Nagasaki Hoju pork, the highest quality pork not available at the market, chilled fresh from the farm and sent directly. The surprisingly soft and savory fat melts in your mouth.

[Tonkatsu, fried shrimp, curry]  
KINTON



OPENING HOURS / 11:00 AM – 3:00 PM (Last order 2:30 PM),  
5:00 PM – 9:00 PM (Last order 8:30 PM)  
REGULAR DAY OFF / Tuesday, and Closed (New Year's Day)



SAN  
PLAZA  
B1  
MAP:26

**Colorful set meal**  
1,950 yen (tax included)

A luxurious set meal that includes the best of everything!

• Australian sirloin steak • Special bibimbap  
• Three kinds of kimchi • Slowly simmered black wagyu beef tail soup.

This 4 dish set is highly recommended!

\*Meat will be served after grilling.

[Yakiniku]



YASUBE

OPENING HOURS / 11:30 AM – 2:30 PM, 5:30 PM – 9:00 PM  
REGULAR DAY OFF / Monday



SAN  
PLAZA  
B1  
MAP:66

**Thick-sliced rare beef cutlet set (medium)**  
1,380 yen (tax included)

A thick-cut beef cutlet specialty store; eat with your favorite sauces.

A mouthwatering plate with Kobe beef steak, Thick-sliced and medium-rare beef cutlet with your favorite sauce (special demi-glace, Japanese-style grated ponzu sauce, teriyaki with soft-boiled egg). Enjoy a truly delicious beef cutlet and unique quality.

[Thick-cut beef cutlet specialty]  
GYUKATSU-TEI



厚切り牛カツ専門店  
神戸牛かつ亭

OPENING HOURS / 11:00 AM – 9:30 PM (Last order 9:00 PM)  
REGULAR DAY OFF / Closed (New Year's Day)



CENTER  
PLAZA  
B1  
MAP:57

**Children's plate for adults**  
2,860 yen (tax included) \*Weekday lunch only

All Kobe beef!! A high volume luxury plate! A mouthwatering plate with Kobe beef steak, 100% Kobe beef hamburger steak, Kisshokichi's special curry, and fried shrimp. Maximum satisfaction guaranteed!

[Kobe beef]



KISHOKICHI

OPENING HOURS / 11:00 AM – 3:00 PM (Last order 2:30 PM),  
5:00 PM – 8:30 PM (Last order 8:00 PM)  
REGULAR DAY OFF / Irregular days off



PLAZA  
WEST  
B1  
MAP:43

**Katsumeshi (medium)**  
880 yen (tax included)

Our popular No.1 wagyu Japanese Black 1,280 yen ~

A Kakogawa, Hyogo local dish, introduced on the TV show 'Kenmin Show'. Created with select ingredients, this is a flavor you must try once!

[Kakogawa specialty katsumeshi]



OPENING HOURS / 11:00 AM – 8:00 PM  
REGULAR DAY OFF / Irregular days off

B1



ELEVATOR

Sannomiya Plaza Meitenkai

Please take notice. Some items may be unavailable or prices revised. In addition, shops may be closed without notice.



Meitenkai  
members

## Restaurants by cuisine

# Pasta/Western&Meatdishes

Popular pasta and excellent western food!  
When you want to eat with gusto, meat dishes are the way to go!



CENTER  
PLAZA  
B1  
MAP:20

**Tandoori chicken curry**  
950 yen (tax included)

Please enjoy the spicy curry with plenty of vegetables at Kobe Roman. We have been carefully selecting, blending, and roasting our own spices for many decades. Enjoy the enhanced flavor, aroma, and spiciness. Try adding some to our curry.

[Curry & Western food]  
KOBÉ ROMAN

神戸浪漫

OPENING HOURS / 11:00 AM – 3:00 PM (Last order 2:30 PM),  
5:00 PM – 8:00 PM (Last order 7:30 PM)  
Until 3:00 PM only on Fridays  
REGULAR DAY OFF / Monday



さん  
プラザ  
B1  
MAP:2

**Premium Chateaubriand set**  
2,600 yen (tax included)  
**Extra-large minced cutlet set**  
1,100 yen (tax included)  
**Premium pork loin cutlet set**  
1,900 yen (tax included)

The finest pork that recreates the concept of tonkatsu!

Nagasaki Hoju pork, the highest quality pork not available at the market, chilled fresh from the farm and sent directly. The surprisingly soft and savory fat melts in your mouth.

[Tonkatsu, fried shrimp, curry]  
KINTON



OPENING HOURS / 11:00 AM – 3:00 PM (Last order 2:30 PM),  
5:00 PM – 9:00 PM (Last order 8:30 PM)  
REGULAR DAY OFF / Tuesday, and Closed (New Year's Day)



SAN  
PLAZA  
B1  
MAP:26

**Colorful set meal**  
1,950 yen (tax included)

A luxurious set meal that includes the best of everything!

• Australian sirloin steak • Special bibimbap  
• Three kinds of kimchi • Slowly simmered black wagyu beef tail soup.

This 4 dish set is highly recommended!

\*Meat will be served after grilling.

[Yakiniku]



YASUBE

OPENING HOURS / 11:30 AM – 2:30 PM, 5:30 PM – 9:00 PM  
REGULAR DAY OFF / Monday



SAN  
PLAZA  
B1  
MAP:66

**Thick-sliced rare beef cutlet set (medium)**  
1,380 yen (tax included)

A thick-cut beef cutlet specialty store; eat with your favorite sauces.

A mouthwatering plate with Kobe beef steak, Thick-sliced and medium-rare beef cutlet with your favorite sauce (special demi-glace, Japanese-style grated ponzu sauce, teriyaki with soft-boiled egg). Enjoy a truly delicious beef cutlet and unique quality.

[Thick-cut beef cutlet specialty]  
GYUKATSU-TEI



OPENING HOURS / 11:00 AM – 9:30 PM (Last order 9:00 PM)  
REGULAR DAY OFF / Closed (New Year's Day)



CENTER  
PLAZA  
B1  
MAP:57

**Children's plate for adults**  
2,860 yen (tax included) \*Weekday lunch only

All Kobe beef!! A high volume luxury plate! A mouthwatering plate with Kobe beef steak, 100% Kobe beef hamburger steak, Kisshokichi's special curry, and fried shrimp. Maximum satisfaction guaranteed!

[Kobe beef]



KISHOKICHI

OPENING HOURS / 11:00 AM – 3:00 PM (Last order 2:30 PM),  
5:00 PM – 8:30 PM (Last order 8:00 PM)  
REGULAR DAY OFF / Irregular days off



PLAZA  
WEST  
B1  
MAP:43

**Katsumeshi (medium)**  
880 yen (tax included)

Our popular No.1 wagyu Japanese Black 1,280 yen ~

A Kakogawa, Hyogo local dish, introduced on the TV show 'Kenmin Show'. Created with select ingredients, this is a flavor you must try once!

[Kakogawa specialty katsumeshi]



OPENING HOURS / 11:00 AM – 8:00 PM  
REGULAR DAY OFF / Irregular days off

B1



ELEVATOR

Sannomiya Plaza Meitenkai

Please take notice. Some items may be unavailable or prices revised. In addition, shops may be closed without notice.

Meitenkai  
members

Restaurants by cuisine

# Asian&Cafe&Take-out

International cuisine that will make you want to eat it.  
After dinner, relax in the coffee shop and take home some souvenirs!



SAN  
PLAZA  
1F

**Kobe chocolate parfait**  
1,265 yen (tax included)

**You can only get this here! Parfait is limited to the main store.**  
An original chocolate parfait limited to the main store using vanilla ice cream, chocolate ice cream, and chocolate mousse.

[Confectionery & Cafe]



OPENING HOURS / 11:00 AM – 8:00 PM  
REGULAR DAY OFF / Closed (New Year's Day)



SAN  
PLAZA  
B1  
MAP:6

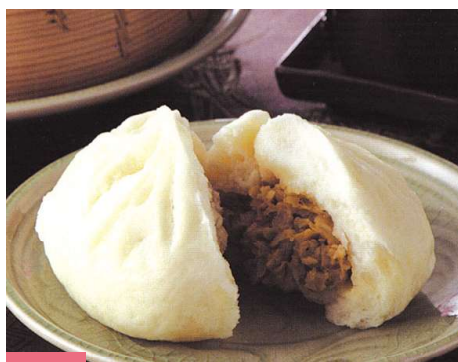
**TEMAHIMAN almond bars**  
5pcs 993 yen (tax included)  
8pcs 1,512 yen (tax included)

**The best almond bar ever!**  
A masterpiece of carefully selected fragrant almonds lovingly packed into one bar. A sumptuous almond bar made with particular attention to the density of each grain.

[Sweets specialty store]  
MARUSIGE



OPENING HOURS / Mon to Fri 11:00 AM – 8:00 PM  
Bargain Day Specials 11:00 AM – 8:30 PM  
Sat, Sun, and holidays 11:00 AM – 7:30 PM  
REGULAR DAY OFF / Closed (New Year's Day)



SAN  
PLAZA  
1F

**Pork buns (10 pieces)**  
2,400 yen (tax included)

**Traditional handmade pork buns! Taiheikaku pork buns.**

High-quality pork from Kyushu, carefully selected onions and cabbage wrapped in a slightly sweet crust. Please enjoy the traditional flavor!

[Pork buns, bean buns, and boiled buns]



OPENING HOURS / 11:00 AM – 7:30 PM \*We close when we sell out.  
REGULAR DAY OFF / Closed (New Year's Day)



CENTER  
PLAZA  
1F

**Leaf Memory gift box**  
1,296 ~ 6,480 yen (tax included)

**A very popular Kobe souvenir!**  
The legendary, lovable leaf-shaped chocolate "Leaf Memory"! We also offer seasonal products and service bags for home use.

CHOCOLATE HOUSE



KOBE · OKAMOTO

OPENING HOURS / 10:00 AM – 8:00 PM  
REGULAR DAY OFF / New Year's Day and January 2nd



PLAZA  
WEST  
1F

**THE Makunouchi**  
670 yen (tax included)

**Kamado: the concept of 'warm and delicious bento'**

Honke Kamadoya was established in Kobe. The Makunouchi is updated every two months to take advantage of seasonal ingredients! We also deliver, so please feel free to call us.

[Bento]

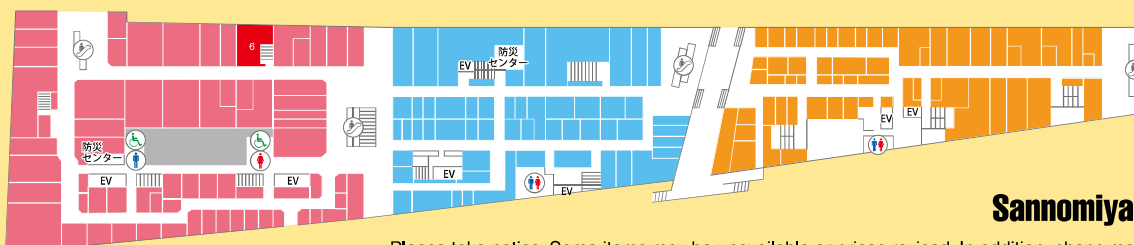
HONKE KAMADOYA



全国チェーン  
本家かまどや

OPENING HOURS / Weekdays and holidays 10:00 AM – 8:00 PM,  
Saturday 10:00 AM – 7:00 PM \*Please contact us for delivery availability.  
REGULAR DAY OFF / Sunday

B1



ELEVATOR

**Sannomiya Plaza Meitenkai**

Please take notice. Some items may be unavailable or prices revised. In addition, shops may be closed without notice.



## Japanese cuisine &amp; Flour based foods

Set menus, rice bowls, sushi and tempura!  
And famous flour based foods!



SAN  
PLAZA  
B1  
MAP:4

**Pork belly and pork shoulder  
loin bowl (large serving)**  
1,090yen (tax included)

A pork bowl specialty restaurant where you can eat charcoal-grilled pork with a special sauce. Takoyaki served with broth. Fluffy dough with plenty of eggs and crunchy pieces of octopus: irresistible! We recommend you dip it into our sauce and then into the broth!

[Pork bowl]  
BUTAMESHIYA

豚めし家

OPENING HOURS / 11:00 AM – 9:00 PM  
REGULAR DAY OFF / Closed (New Year's Day)



SAN  
PLAZA  
B1  
MAP:10

**Sashimi set meal**  
1,380yen (tax included)

**A popular set meal!**  
Featuring 5 kinds of fresh sashimi guaranteed to satisfy even the most discerning sashimi lover.

[Japanese food and sake]

酒房 灘 NADA

OPENING HOURS /  
Sun to Thu 11:00 AM – 8:00 PM (Last order 7:30 PM)  
Fri, and Sat 11:00 AM – 9:00 (Last order 8:30 PM)  
REGULAR DAY OFF / Monday/Tuesday



SAN  
PLAZA  
B1  
MAP:54

**Yamagata pork loin tonkatsu set**  
1,800 yen (tax included)

**Our pork is from pigs born and raised in Yamagata.**

Savory, sweet and tender pork crispy fried with an original blend of breadcrumbs. Excellent with sesame sauce or one of our other sauces.

[Tonkatsu specialty]  
TONKATSU NAGATAEN

とんかつ  
ながつた園

OPENING HOURS / 11:00 AM – 8:30 PM (Last order 8:00 PM)  
REGULAR DAY OFF / Closed (New Year's Day)



CENTER  
PLAZA  
B1  
MAP:10

**Conveyor belt sushi**  
One plate is 100 yen (110 yen including tax) ~

**Conveyor belt sushi. Harima's fresh fish nigiri sushi Rikimaru**

Reasonably priced from 100 yen (110 yen tax included), authentic conveyor belt sushi, handmade by a skilled sushi chef with seafood from all over Japan.

[Conveyor belt sushi]  
RIKIMARU

回轉寿司  
うさぎ  
USAGI

OPENING HOURS / 11:00 AM – 9:00 PM (Last order 8:40 PM)  
REGULAR DAY OFF / Closed (New Year's Day)



CENTER  
PLAZA  
B1  
MAP:21

**Makino tempura set**  
1,210yen (tax included)

**Crispy, freshly fried tempura served hot and made to order!**

Our most popular set meal featuring chicken tempura marinated in broth and soy sauce. Other options include shrimp, whiting, and maitake mushrooms. If you want to enjoy a variety of Makino's tempura, this set meal is highly recommended!

[Tempura specialty]  
MAKINO

揚げたて  
天ぷら定食 まきの

OPENING HOURS / 11:00 AM – 9:00 PM (Last order 8:30 PM)  
REGULAR DAY OFF / Closed (New Year's Day)

B1



ELEVATOR

Sannomiya Plaza Meitenkai

Please take notice. Some items may be unavailable or prices revised. In addition, shops may be closed without notice.

